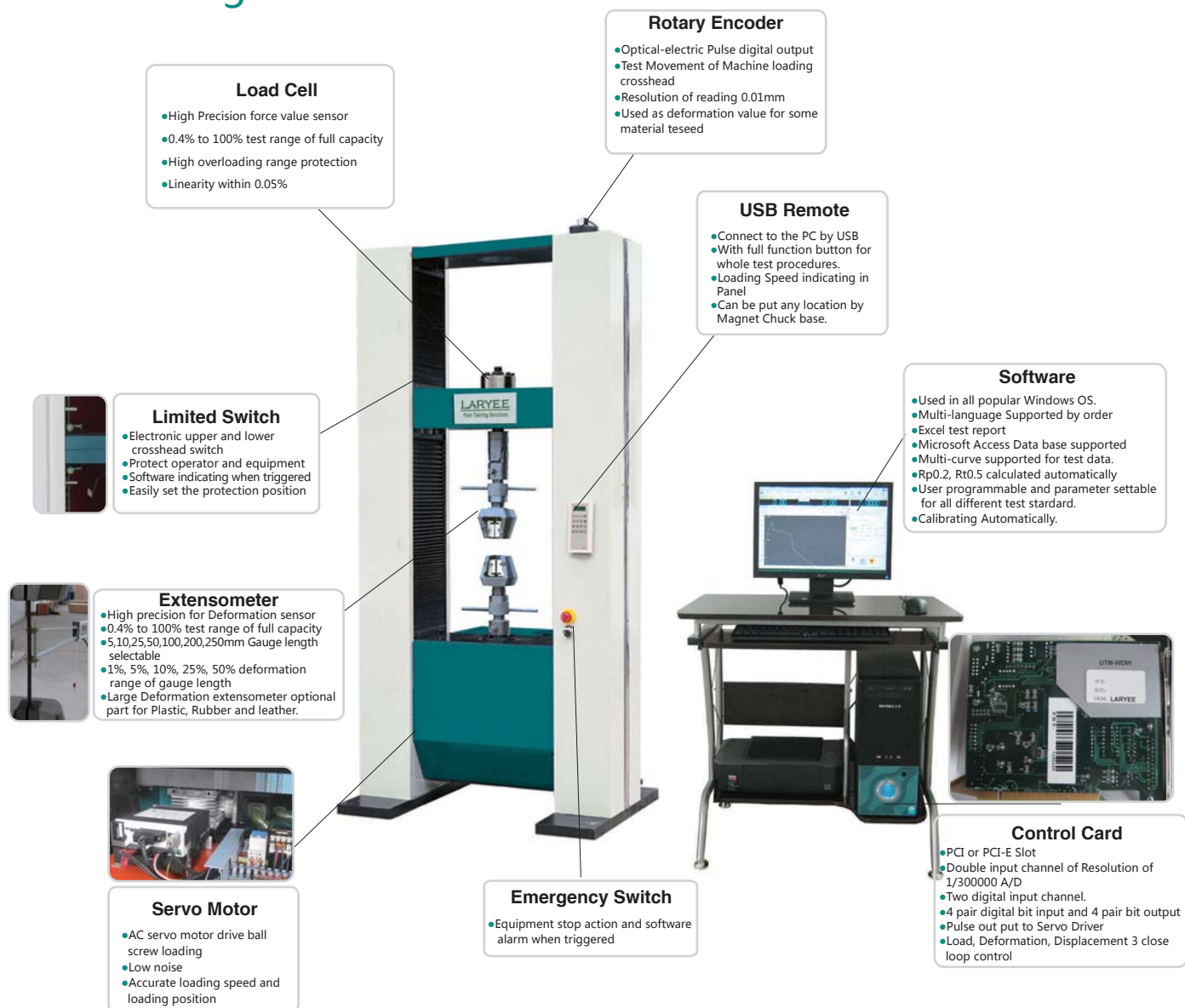


# Computer Control Electronic Universal Testing Machine



## Model Definition U E 3 4 300

·U·

| symbol | Testing     |
|--------|-------------|
| U      | Universal   |
| T      | Tensile     |
| C      | Compression |

·3·

| symbol | Machine type       |
|--------|--------------------|
| 1      | Single Benchtop    |
| 2      | Double Benchtop    |
| 3      | Double Floor Stand |

·E·

| symbol | Load drive |
|--------|------------|
| M      | Manually   |
| E      | Motor      |
| H      | Hydraulic  |

·300·

| symbol | Load Capacity      |
|--------|--------------------|
| kN     | For Motor drive    |
| ton    | For Hydraulic type |

·4·

| symbol | Display or control  |
|--------|---------------------|
| 1      | Mechanical indicate |
| 2      | Digital indicate    |
| 3      | Computer indicate   |
| 4      | Computer Servo      |

## Specification

| Model   | UE1401/02/05                                     | UE2401/02/05/10/20 | UE3450/100                      | UE34200       | UE34300       |
|---|--|--------------------|---------------------------------|---------------|---------------|
| Maximum force(kN)                                     | 1/2/5  | 1/2/5/10/20        | 50/100                          | 200           | 300           |
| Machine type  | Single   | Double             | Floor                           | Floor         | Floor         |
| Measuring range of force (kN)                         | 0.4%--100%F.S                                    |                    |                                 |               |               |
| Resolution of force                                   | 1/300000 of maximum force                        |                    |                                 |               |               |
| Accuracy of displacement measuring                    | ±0.5%  |                    |                                 |               |               |
| Resolution of displacement                            | 0.1 μm   |                    |                                 |               |               |
| Accuracy of deformation measuring                     | ±0.5%  |                    |                                 |               |               |
| Speed range of displacement control                   | 0.01-500mm/min (Max 1000mm/min as special order) |                    |                                 |               |               |
| Speed range of force control                          | 0.005-5% F.S / S                                 |                    |                                 |               |               |
| Speed range of deformation control                    | 0.005-5% F.S/S                                   |                    |                                 |               |               |
| Range of constant displacement, force and deformation | 0.5%-100% F.S                                    |                    |                                 |               |               |
| Speed controlling accuracy                            | ≅±1.0% of the set value                          |                    |                                 |               |               |
| Valid tension testing space(mm)                       | 800  | 800                | 650                             | 600           | 600           |
| Compression testing space(mm)                         | 900  | 900                | 900                             | 1000          | 1000          |
| Valid width between columns(mm)                       | /  | 400                | 600                             | 580           | 600           |
| Tension sample clamping (mm)                          | Flat grips                                       | 0~20               | 0~14                            | 0~14          | 0~20          |
|   | Round grips                                      | /                  | Ø4~14                           | Ø4~22         | Ø9~26         |
| Power supply  | 1P~220V, 1-3 kW, 50/60Hz                         |                    | 3P~380V/220V, 4-7.5 kW, 50/60Hz |               |               |
| Working environment                                   | Room temperature 10℃ ~40℃, relative humidity≤90% |                    |                                 |               |               |
| Over dimension without PC table (mm)                  | 600×420×1800                                     | 830×550×1950       | 1050×800×2250                   | 1150×870×2450 | 1250×900×2650 |
| Weight(Kg)  | 300kg  | 600kg              | 1500kg                          | 1800kg        | 2000kg        |

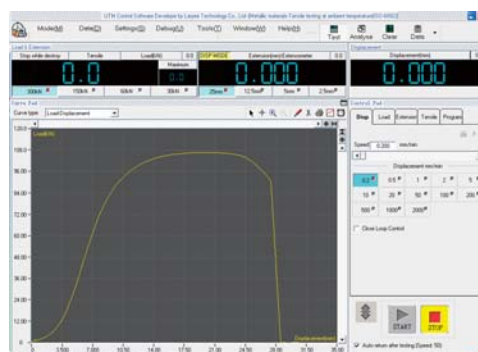


## Control System

- ※ High accuracy Load cell, Encoder and optional extensometer to test the force, displacement and extension. Reading resolution can be 1/300000 of full range. Computer 3 close-loop control testing mode of load, displacement and extension.
- ※ Large Extension and Digital gauge input channel for special test of deformation.
- ※ Speed control from 0.01 to 500mm/min (special 1000mm/min) by servo motor.
- ※ PCI computer control card to get the test value and control the servo motor
- ※ Multi-languages supported, Data saves and transports to Microsoft Words, Excel.
- ※ Database function, allow customer define test method, real-time test point value, value result formula and test report format.
- ※ Multi sensor supported. Max 4 load cell , 4 strain gauge extensometer, 1 large deformation extensometer and 1 digital gauge can be defined.
- ※ Metric and British unit exchanging supported mm, N, KN, kg and inches, lbs and pound.
- ※ Calibration automatically and easily
- ※ Two grade of user administrate system for common operator and system administrator
- ※ Remote controller adjusts the machine crosshead before test and operate the test conveniently.
- ※ Support different version of Microsoft windows OS of WinXP, Vista, Windows 7 and etc.



Control Card



Software



USB Remote

## Standard Accessories

Wedge Tension, Compression Plate, 3-Points bending accessories; Encoder installed; Load cell installed; Servo motor and controller built in; Extensometer; DSP PCI Control card; Installation tools; PC and Printer.

## Optional Accessories List



Wedge Tension 1



Wedge Tension 2



Pneumatic Tension



Flat Tension



Film Tension



Opposite Peeling



Thread Tension 1



Thread Tension 2



Bolt Tension



Nail Withdraw



3-Points Bend



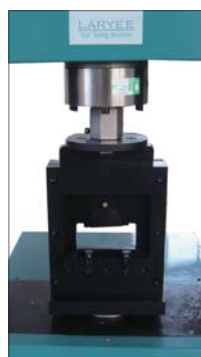
Shear



4-Points Bend



Compression Plate



Wood Shear



Wood Bending